

USER MANUAL

— DT24 Pro Baby Monitor —

DRAGONTOUCH®






CONTENTS

I. Warning	1
II. Packing List	2
III. Overview	2
IV. Getting Started	4
1. Charge the Camera	4
2. Camera Pairing	5
3. View	5
V. MONITOR SCREEN ICON	6
VI. FQA	7
VII. CUSTOMER SERVICE	7

I. WARNING

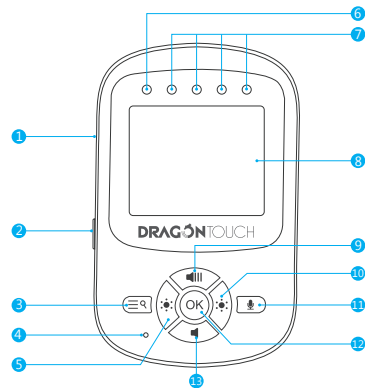
1. Strangulation Hazard - Children have strangled in cords.
Keep this cord out of the reach of children (more than 3 feet (1m) away).
2. Never Place the Camera of Cord in or Near Crib or Playpen.
Secure the cord at least three feet away from crib or playpen.
3. Caution - Only insert a battery pack, Never use the transmitter or receiver near water, including near a bathtub, sink, laundry tub, wet basement, etc.
4. Use only the AC adapters provided.
5. Adult assembly is required. Keep small parts away from children when assembling.
6. This product is not a toy. Do not allow children to play with it.
7. This product is not intended to replace proper adult supervision of children.
8. You must check your child's activity regularly, as this product will not alert parents to silent activities of a child.
9. Before using this product, read and follow all instructions and warnings contained in this booklet.
10. This product is intended for indoor use only.
11. This product is not intended for use as a medical monitor and its use should not replace adult supervision.
12. Test monitor before use and after changing camera location. Check reception regularly.
Obstacles, such as concrete walls, may shorten the wireless signal transfer range.
13. Always unplug AC adapters from wall outlets and power sources during periods of non-use.
14. Do not touch the plug contacts with sharp or metal objects.
15. Do not allow water damage to the monitor unit, charging port, or charging cable which cause overheat of the charging components.
16. Do not use unofficial third party charging cables and adapters to charge the device.
This may result in overheat of the charging port. Only use the charging cables and adapters provided in the box.

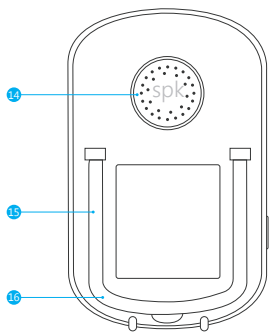
II. PACKING LIST

 DT24 Pro Camera	 DT50 Monitor	 Camera Power Adapter
 Monitor Power Adapter	 Quick Reference Guide	

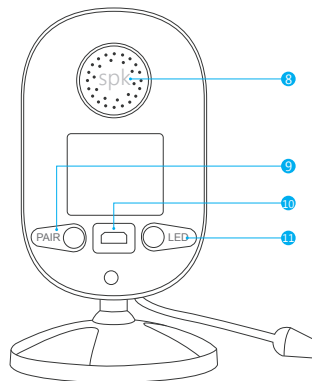
OVERVIEW

1. Wireless Monitor Overview



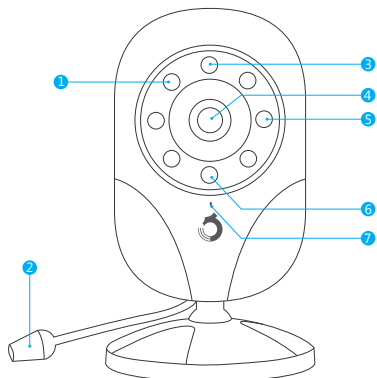


1. DC 5V Charging Port
2. Power
3. Menu / Zoom
4. MIC
5. Luminance "-" / Left Key
6. Power/Charge Indicating Light
7. Volume Indicating Light
8. 2.4" LCD Screen
9. Volume "+" / Up Key
10. Luminance "+" / Right Key
11. Talk Button
12. OK Key
13. Volume "-" / Down Key
14. Speaker
15. Bracket
16. Reset Key



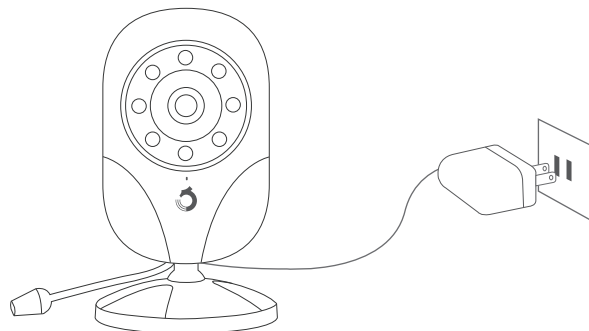
1. Night Vision Sensor
2. Temperature Sensor
3. Night Light
4. Lens
5. Night Vision Light
6. Charging LED Light
7. MIC
8. Speaker
9. PAIR
10. DC 5V Charging Port
11. Night Light Button

2. Camera Overview






IV. GETTING STARTED

1. Charge the Camera



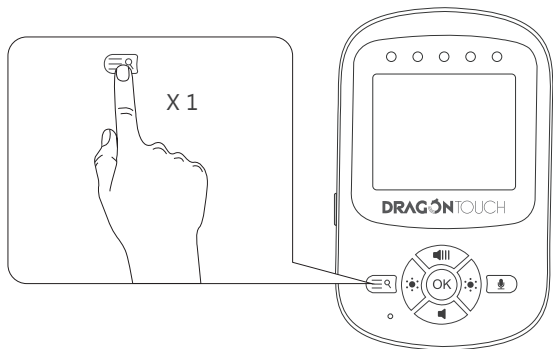
- ① Connect the camera power adapter to the camera unit.
- ② Position your camera unit no less than 3 feet away from your baby's crib. Ensure the power cord is not within reach of your baby.

2. Camera Pairing

Press  turn on the camera then press  button to enter **MAIN MENU**, press  and to "Pairing" option after it turns red and highlighted. Then press the "OK" button begin pairing. Meanwhile press the "PAIR" button behind the camera for 3s.

3. Menu Setting






- ① Press and hold the power button to power on the monitor.
- ② Press the menu button to open Menu Settings.



Menu Options	Description	Available Options
Brightness	Set the brightness of the screen.	Level 1 / Level 2 / Level 3 / Level4 / Level5
Temperature	Displays the current nursery room temperature.	°C / °F

Menu Options	Description	Available Options
Light Led	Camera night light	ON / OFF
Pairing	Pair cameras Note: You can add up to 4 cameras per baby monitor.	Camera 1 / Camera 2 / Camera 3 / Camera 4
Music	Playing lullabies to smooth your baby. There are 3 internal lullabies.	Music 1 / Music 2 / Music3 / OFF
Vox	Vox Level Note: You can set the baby monitor to alert you, when a specific noise level is detected.	LOW / MID / HIG / OFF
Feeding	Set feeding alarm on the baby monitor.	2H / 4H / 6H / OFF
Exit Menu	Return to the interface.	

V. MONITOR SCREEN ICON

	Wireless signal strength
	Sound level
Vox	Vox mode enable
	Show you which camera on display
80F	Current nursery room temperature
	Digital zoom enable
	Current battery level of the monitor unite

VI. FQA

Q: Cannot to connect to camera.

A: 1. Please ensure the camera keep charging.
2. Please ensure the camera and monitor within 900 feet (at open area).

Q: The baby monitor has some noise.

A: The camera and tablet may be too close. Move them further apart.

Q: Can I use the 220V?

A: The working voltage of this baby monitor is 110-240V

Q: How long this monitor can standby?

A: After charged full, the monitor can standby about 4 hours.

Q: Can I hear my baby's voice when turn off the screen?

A: Yes, please turn on the "VOX" function and press **⏸** to turn off the screen, then you will hear your baby's voice and alarm once any abnormal sound or noise happened.

Q: Picture is black and white?

A: Night vision mode operates in black and white. Turn on room light to force monitor out of night vision mode.

VII. CUSTOMER SERVICE

For any inquiries, issue or comments concerning our products, please contact us, and we will respond as soon as possible.

- **Warranty**

12-month limited warranty

- **Call us**

(301)670-7335 9am-5pm EST, Monday-Friday (except holidays)

- **Email us**

E-mail: cs@tablexpress.com