

DRAGONTOUCH

CLASSIC 10

DIGITAL PHOTO FRAME



USER MANUAL

V4.0

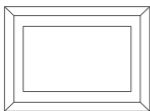
Welcome to Dragon Touch!

Dragon Touch digital frame is designed to collect & display thousands of your photos privately and safely. It's easy to get connected with all your loved ones around the world. This manual will provide details you need to set up your frame, invite families and friends to share photos with your new Dragon Touch frame. Let's get started!

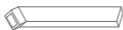
Table of Contents

| | |
|---|----|
| What's in the box----- | 01 |
| Frame Features----- | 01 |
| Getting Started----- | 03 |
| Uploading Photos and Videos to the Frame----- | 05 |
| 1. Upload Photos and Videos Via VPHOTO App----- | 05 |
| 2. Upload Photos and Videos Via Email----- | 09 |
| 3. Upload Photos and Videos Via USB Drive /SD Card----- | 10 |
| 4. Upload Music Via USB Drive/SD Card----- | 12 |
| Key Features----- | 13 |
| 1. Picture Slideshow----- | 13 |
| 2. Video Slideshow----- | 15 |
| Multiple Functions----- | 16 |
| General Settings----- | 17 |
| Technical Specification----- | 20 |
| Troubleshooting----- | 21 |
| Contact Us----- | 22 |

What's in the box



DragonTouch Wifi Cloud
Photo Frame Classic 10



Stand

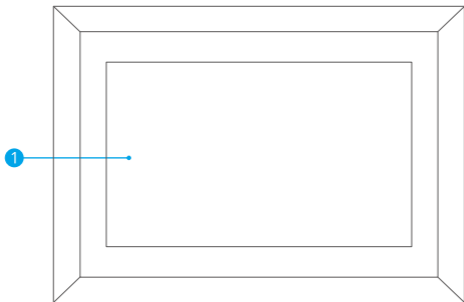


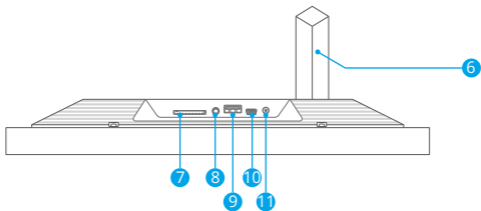
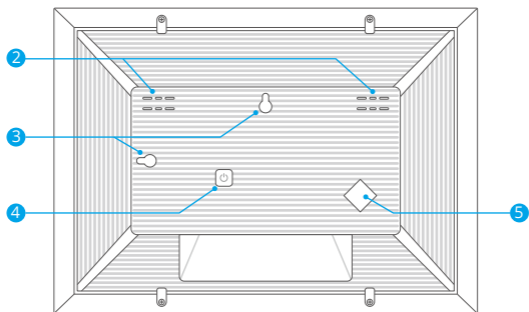
Power Adapter with
Power Cable



User Manual

Frame Features



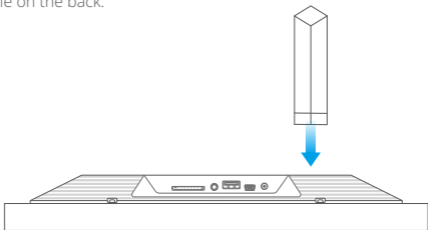


- | | |
|--------------------------|------------------------|
| ① 10.1" IPS Touch Screen | ⑦ Memory Card Slot |
| ② Speakers | ⑧ 3.5mm Headphone Jack |
| ③ Wall Mount Hole | ⑨ USB-A Port |
| ④ Power Button | ⑩ Mini USB Port |
| ⑤ Stand Port | ⑪ DC Power Port |
| ⑥ Stand | |

Getting Started

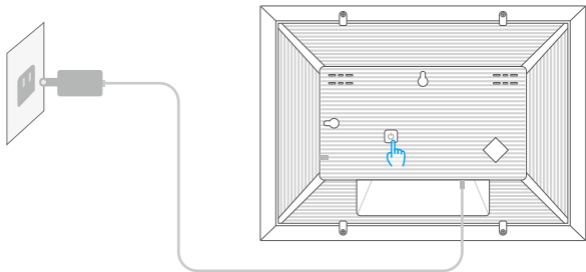
1. Install the stand

Insert the bracket into the bracket hole on the back of the frame. You can place the frame either in landscape or portrait (we recommend you place it in landscape during the first setup). You can also mount the frame on the wall with the Wall Mount Hole on the back.



2. Power on

Connect the Power Cable to your frame and plug the Power Adapter into the wall socket, the frame will enter the system in seconds.



3. Plug in your frame

Connect the socket to the back of the photo frame, then plug it into a power source. The frame will power on in seconds. You can place the frame either in landscape or portrait mode (we recommend you place it in landscape mode during the first setup).

4. Initial Settings

There are several initial settings including Language, Wifi, Nickname, City, Timezone etc. when you enter the system for the first time.

5. Connect to Wifi

You can connect to Wifi during the initial settings or under the Wifi setting. Tap the Settings icon to enter the settings page, locate Wifi and tap on it to connect Wifi. Select the Wifi network you would like to connect and enter the password for connection. If your Wifi network is not on the list, move your frame closer to your router, wait for seconds and check it again.

Note:

- ① The photo frame supports 2.4GHz Wifi networks.
- ② A private Wifi network is highly recommended.

Uploading Photos and Videos to the Frame

1. Upload Photos and Videos Via VPHOTO App

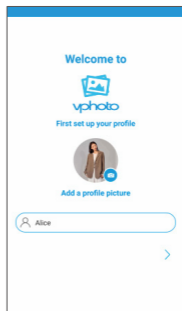
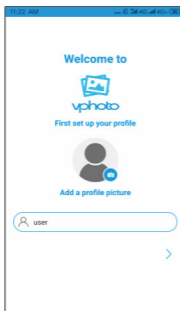
1.1 Download the Vphoto App

Please download and install the Vphoto app on your mobile device by searching Vphoto in the App Store or Google Play Or scanning the QR code below.



1.2 Create an Account

Open the Vphoto app, then set your user name and your profile photo.

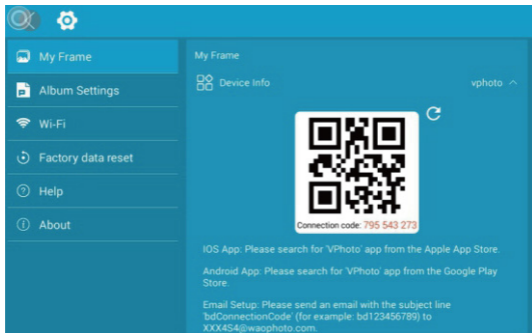
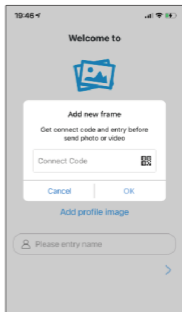


1.3 Pair Your Frame with the App

After completing the account setup process, you'll need to enter the connection code or scan the QR code of your frame. Once you've entered the connection code, you will see a pop-up message that says **"Bind success"**. This indicates that your account has been successfully linked to your frame and you're ready to start using it.

Note:

- ① The Connection code is a 9-digit serial number that is unique to your frame. You can find this code by accessing your frame's settings page and navigating to **"My Frame"**.
- ② The Connection code and QR code will refresh every 12 hours.
- ③ To view the connection code and QR code, you need to connect your frame to Wifi first. If you have not done so, the connection code and QR code will not load out.

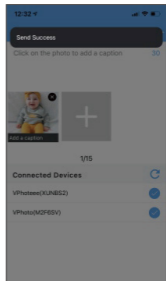
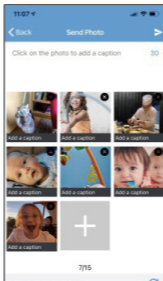
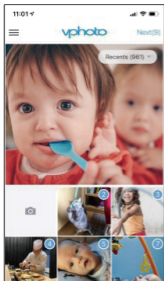


1.4 Upload Photos and Videos to Your Frame

After pairing the App with your frame, you can start adding photos and videos to your frame anywhere and anytime in the following two ways:

(1) Upload photos or videos from your phone's album.

First, select the photos or videos from your phone's album you would like to upload. Second, tap "Next" to choose the frame you would like to send them to. Last, tap the arrow icon in the upper right corner to send photos. Your photos or videos are successfully uploaded to your frame.



Warm tip:

- ① You can write captions for each photo before uploading. To do this, simply tap on the photo to add descriptions.
- ② You can't modify the title after uploading the photo to the frame.

(2) Upload new photos or videos.

First, tap the camera icon to take new photos or videos. Second, choose the frame you would like to send them to. Third, tap the arrow icon in the upper right corner to confirm. The photo frame will receive the photos or videos in seconds, you can check them on the frame's photo or video library.

Note:

- ① If the frame didn't receive the photos or videos, please reboot the product or check the Wifi network.

- ② Each video clip is limited to 200MB.
- ③ Videos can only be uploaded individually.

1.5 Invite Your Families & Friends to Connect to Your Frame

Your families and friends can share their happy moments to your frame by following the steps below:

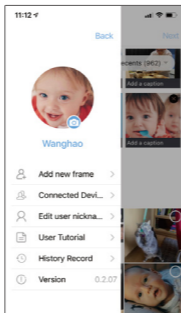
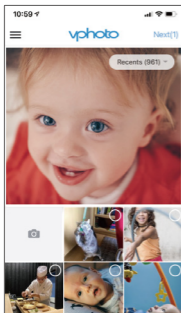
- ① Download and install the Vphoto app.
- ② Open the app, then set user name and profile photo.
- ③ Get the connection code from you to connect to your frame. Please make sure your connection code is valid.
- ④ Start sending the photos and videos to your frame.

Here are two ways to share your connection code:

- 1) Take a screenshot of the connection code of your frame, then share it with your families or friends.
- 2) ① Open your Vphoto App, and tap the icon in the upper left corner.
 - ② Select "**Connected Frame**" from the menu.
 - ③ Choose the frame you want your friend to connect to, then tap the Share icon.
 - ④ You will receive a picture of the QR code and Connection code.
 - ⑤ Send it to your families or friends.

Note:

- ① The Connection code is a 9-digit serial number that is unique to your frame. You can find this code by accessing your frame's settings page and navigating to "**My Frame**".
- ② The Connection code and QR code will refresh every 12 hours.
- ③ To view the connection code and QR code, you need to connect your frame to Wifi first. If you have not done so, the connection code and QR code will not load out.

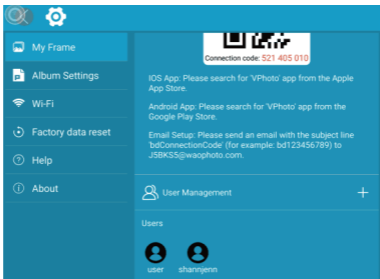


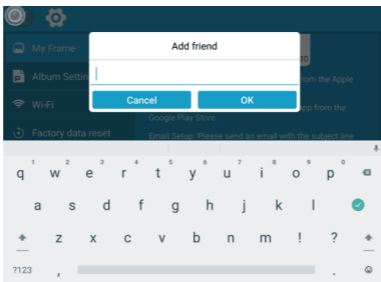
2. Upload Photos and Videos Via Email

You and your friends can also send photos and videos to the frame via Email.

2.1 Connect Your Email Address to the Frame

When the frame is on the settings screen, tap the "+" in "User Management", then add mailboxes. You or your friends will receive an email to inform your binding request is completed and the way to send photos and videos to the frame.





2.2 Upload Photos and Videos to Your Frame

After adding your email address to the frame, you can email photos and videos to the mailbox of the frame.

Your photos and videos will be received in minutes. You can check them on the frame's photo or video library. Each video clip is limited to 200MB.

3. Upload Photos and Videos Via USB Drive /SD Card

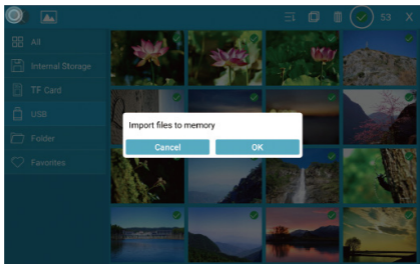
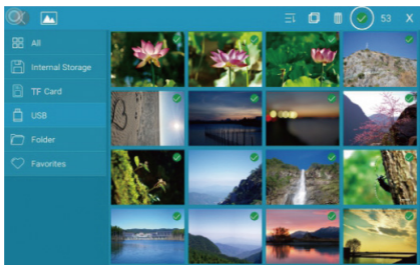
The frame can also support adding photos and videos via some external drives, such as USB drive and SD Card.

- (1) Insert a USB drive or a SD card into the frame, and wait for seconds, the frame will notify you when successfully connected.
- (2) Enter the Photo or Video library, and tap USB or SD Card, you will see all the photos or videos stored in the USB drive or the SD card.
- (3) Tap the More icon in the upper right corner, select the photos or videos you would like to copy to the internal memory of the frame.
- (4) Tap the Copy icon on the top then choose OK to import the photos or videos.

(5) Your photos or videos will be reserved in Internal Storage in seconds. You can check them on the frame's photo or video library.

Note:

- ① Max support a 32GB SD Card.
- ② Please remove all your external devices when you reset the photo frame.
- ③ If you have too many files stored in the card, it will take more time to read.
- ④ Not all models support external drive. Please prevail in kind.
- ⑤ USB drive or SD Card supports the FAT32 format only.



4. Upload Music Via USB Drive / SD Card

The frame can also support uploading music via external drive, such as USB drive and SD cards.

- (1) Insert a USB drive or a SD card into the frame, and wait for seconds, the frame will notify you when successfully connected.
- (2) Enter the Music, and tap USB or SD card, you will see all the music stored in the USB drive or the SD card.
- (3) Tap the More icon in the upper right corner, select the music you would like to copy to the internal memory of the frame.
- (4) Tap the Copy icon on the top then choose OK to import the music.
- (5) Your music will be reserved in Internal Storage in seconds. You can check them on the frame's music library.

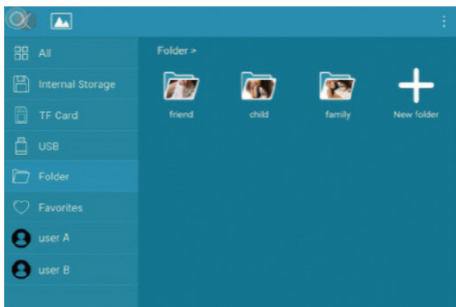
Key Features

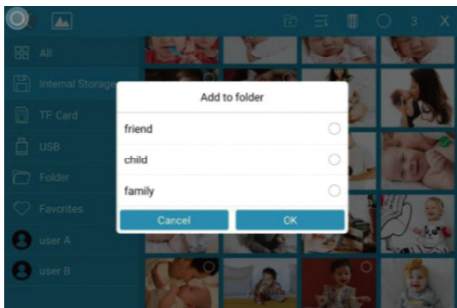
1. Picture Slideshow

Tap any photos in the upper left corner on Homepage to enter the photo library.

You will find options including All, Internal Storage, TF Card, USB, Folder, Favorites and user list. You can check all photos of each playlist and operate in batch.

- **"All"** includes photos in the internal storage and external devices. The default playlist is **"All"**. You also can choose photos in the Internal Storage to start slideshow.
- **"Internal Storage"** includes photos sent from the app, email, or copied from external devices.
- **"TF Card"/"USB"** shows photos in external drives like USB drive or TF cards. To add pictures to **"Internal Storage"** from **"TF Card"/"USB"**, you can tap **"⋮"** at the upper right corner, choose the photos you want to add to **"Internal Storage"**, then tap **"☑"** and **"OK"** to confirm the process.
- **"Folder"** allows you to create folders and name them. Only pictures in **"Internal Storage"** can be added.





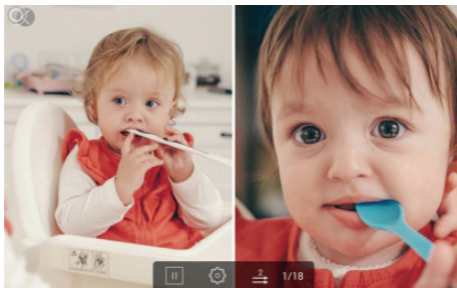
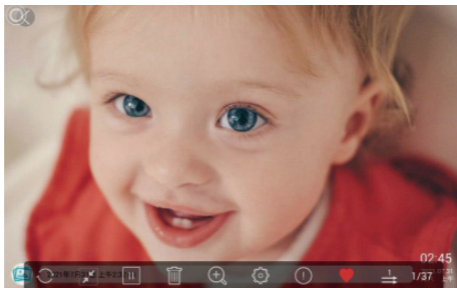
Note:

- ① Only pictures in **"Internal Storage"** can be added into folders and to Favorites.
- ② To delete some pictures, we highly recommend to operate in **"Internal Storage"** instead of **"ALL"**; Or please remove external device while deleting so as to avoid deleting files in **"USB"** or **"TF Card"** by mistake.
- ③ Not all models support external drive. Please prevail in kind.

During the slideshow, you will have more tools to customize the slideshow simply by touching the screen. There will be an operation column on the bottom.

The contents are as follows: Rotate, Full screen display, Pause, Delete, Zoom in, Setting, Information, Add to favorites, Slit screen display.

You can tap "♥" to add the picture to your **"Favorites"** and set multi-display for fun. You can adjust the slideshow transition effect and slideshow interval. You can also pause the slideshow to keep showing the current photo.



2. Video Slideshow

Tap "Video" on Homepage to enter the video library, then select the video you want to play.

Note: Video Clip shared from the app and email will show in the video library.

Multiple Functions

Music

Tap Music on Homepage to enter the music library, then select the music you want to play.

Weather Forecast

Choose "**Weather**" on homepage, you can check the weather of three days. Both [°C] and [°F] are available. You can switch to the temperature format you want to use. By tapping "+" in the upper left corner to add several cities, you can know the weather of the city you add.

Clock

Choose "**Clock**", you can choose the clock skin you like to present the time.

Steps: After entering the clock interface, double-click the screen.


Alarm

Choose "**Alarm**" to set up alarm clock. Tap "**Add**" to add new alarm clock and tap "**Edit**" to adjust the set time and delete the alarm clock you choose.

General Settings

[My Frame]

shows your frame connection code and user management.

- The Connection code and QR code will refresh every 12 hours. You can also refresh the code manually by tapping .
- To nickname your frame, you can tap the frame name in the upper right corner to edit; it will show on the app after you connect it to the frame.
- To send photos and videos to your frame via email, you can simply tap "+" at "**User Management**" to add the email address. Please refer to "**Upload Photos or Videos Via Email**" for more details.

Please refer to "**UPLOADING PHOTOS VIA EMAIL**" for more details.

- "**Users**" allows you to manage the connected account of the frame. Tap the account name, you can view photos, remark names, delete users, or delete both users and photos.

[Album Settings]

• Motion Sensor

Motion sensor will automatically turn off the screen when you're not in the room to save energy.

• Brightness

Adjust the brightness of the screen.

• Sound

Adjust the media volume.

• Touch Sounds

Choose to turn the sound on or off when touching the screen.

- **Assistive Touch**

When Assistive Touch is enabled, the assistive touch will appear on the screen. It is a quick navigation key that helps you easily go to Homepage and adjust the volume.

- **Language**

English, Deutsch, Español, Français, Italiano, русский, 日本語, 简体中文 .
Set the system language.

- **Slideshow**

Set Slideshow time to make the frame automatically display photos after a period time of inactivity.

For example: when you set it to 5 seconds, the screen will automatically switch to the slideshow if there is no operation within 5 seconds.

- **Slideshow Mode**

Choose either Sequential or Random mode to display photos.

- **Sort by**

Choose the pictures to be sorted by time or name.

- **Caption**

When Caption is enabled, the captions you write will be displayed on the photo.

- **Date and Time**

Set the date and time according to your preference. You can select time zone and use network-provided time.

- **Sleep**

Set the Auto-On/Off time to make the display automatically turn on and off at a specific time.

- **Auto-rotate Screen**

When Auto-rotate screen is enabled, you can place the frame in portrait and landscape. The frame will adjust the picture automatically.

- **Notification Sounds**

Choose whether you want to be notified about new messages with sounds or not.

[Wifi]

Select the Wifi you want you frame to connect to.

[Factory data reset]

1. Tap **Factory data reset** to reset your frame.

Here are two ways to reset:

- 1) Choose "**Delete all users and restore the device to inactive**", device files will be reset and all boundusers will be unbound.
- 2) If you do not choose this option, only device files will be back to default settings and bound users remain.

2. Tap **OK** to reset your frame.

[Help]

Simple guide for you to share your pictures.

[About]

Tap "**About**" to check your frame's version, frame ID, serial number, etc. The frame version is of great help to troubleshooting. When you're asked to provide the frame version, you may find it here.

Technical Specification

- **Adapter:** Input 100-240V 50/60HZ
- **Picture Format:** BMP, JPG, GIF, PNG
- **Audio Format:** Mp3, WMA, OGG, AAC, APE, FLAC, WAV
- **Video Format:** MPEG1, MPEG2, MPEG4, Xvid, AVI, M-JPEG, H.264, MOV, VOB , MKV, DIVX4, DIVX5, DIVX33GP
- **External support:** Max 32GB USB drive/SD Card
- Support **2.4GHz Wifi network**

Troubleshooting

1. Does the frame have to be plugged in all the time?

This frame needs to be plugged into a DC outlet all the time.

2. Why can't this frame connect to Wifi?

It supports 2.4GHz Wifi networks, select the Wifi network you would like to connect to and enter the password correctly if required. If your Wifi network is not on the list, restart your frame or move it closer to your router, wait for seconds and check it again.

3. Does this frame need to connect to Wifi to work or just in the setup process?

This frame needs to connect to a Wifi network for setup, receiving new photos or videos, user requests and for software updates. Otherwise, the frame can just play photos or video without a Wifi connection.

4. Why is there no sound from the frame?

Please check if the volume is turned down to 0 and if the player is in Mute mode.

5. Can I share photos and videos to the frame?

Yes, you can share both photos and videos (up to 200MB) to the frame.

6. Can I cycle pictures and videos together?

You could only play photos or videos separately.

7. Can this frame automatically turn on/off at a specific time?

You can go to the Sleep setting and set the auto on/off time as you want.

8. Why are there no files after sharing videos or pictures to cloud server?

Please check if the upload process is completed.

9. Why can't this frame play the file?

Please confirm if the file format is compatible with the frame.

10. Can I change the image transitions and display speed?

Yes, the speed can be adjusted in the bottom column when the picture is displaying.

Contact Us

 (888) 811-1140 (US)

 cs@dragontouch.com

 www.dragontouch.com

For any inquiries about Dragon Touch products, please feel free to contact us. We will respond within 24 hours.